

pSM

Intelligent Security Management

Overview · Control · Security

Overview

“Protection 24/7. Is there a security network for our company?”

When danger threatens, every second counts. Detectors kick in, fire doors close, escape routes are freed up, the emergency services are informed. prime SecurityManagement, pSM, takes care of all of that for you – automatically. The complete spectrum of security applications such as Access control, Building management, Fire detection technology, Video monitoring, etc. can be combined in pSM into a security network with centralised operation.

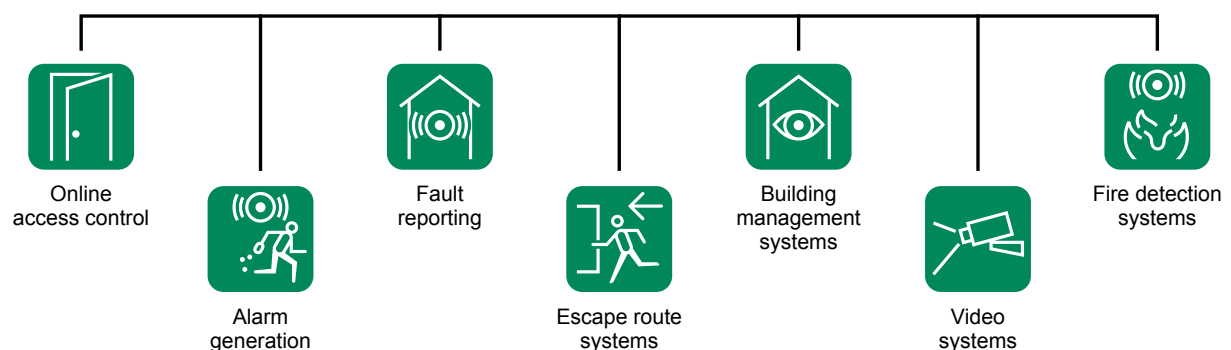
We create transparency for the security-relevant processes within your premises, making an important contribution to Risk Management. Planning and integration are of course part of the service portfolio that we and our System Partners offer. Whether it is deployed in an airport, a public authority or an industrial plant, pSM is modular and can be configured and expanded in terms of size and scope as your wishes dictate. Retrospective expansions are also possible at any time.

All at a Single Glance

Intelligent and efficient hazard management

With pSM, you can establish “Intelligent Hazard Management”. Data supplied by Security or Building Management Systems is integrated and visualised in a central, uniform management GUI, using bi-directional interfaces.

The information from a wide range of individual, non-connected solutions is very quickly pooled to create interactive visualisation. This can then be converted manually, through workflows or automatically through server routines into prompt and timely reactions. Manual interventions can be made by the user, supported by customised Workflows, of required.



Control

Modern Security Management

Optimising reaction processes

By reducing the number of human interfaces in the reaction process, pSM also minimises delays and the potential for information loss.

This guarantees the maintenance of the company's business processes and safeguards its survival – Continuity Management.

Statistics and messages are logged.

The necessary overview is documented.

Trust and quality

Risk management with VdS 3534 approval

pSM, the Risk management system from Primion has been given VdS 3534 approval.

At the same time, conformity with the testing specifications of DIN EN 50518-2 (Monitoring and Alarm Receiving Centre) was tested and confirmed. These are sections 4, 6.1, 8.1, 8.2, 8.4 and 9 for the requirements applicable to a RMS software.

This gives the operating company certification from an independent institution in respect of the quality, reliability and security of the pSM software.

This extends the previous classic application area of Security and Building Management Technology to encompass certified deployment in European Security Command and Control Centres (SCC).



pSM Command Centre with Graphics, Datapoints, Workflows and Alarm stack



Safety

The Latest System Architectures

Future-proof investment

Together, Java and Apache Tomcat create a solution that is independent of both the operating platform and system. This guarantees almost limitless freedom of choice when it comes to selecting hardware and software and as a result, future system sustainability. You are not tied to one operating system. This facilitates the deployment of generic IT technologies, which ensures continuous availability, going forward. In comparison to special customised solutions, the investment costs can be significantly lower.

Optimised scalability

pSM has a modular structure which makes it optimally suited to meet customer demands. From a small system right up to a large wide scale system, growing site requirements can be accommodated as they arise through targeted expansions.

Optimum interface solutions

With a portfolio covering the whole range from standardised to proprietary, manufacturer-specific interfaces, pSM always offers the right solution. This creates a safe environment for investment and planning.

Client-Server architecture

pSM is designed around the Client-Server concept, with the result that tasks can be optimally distributed through the network. The “Rich Client” is called up via prime Launcher.

pSM consists of three different software components through which different functions can be carried out.

Command centre

The operator works through the Command Centre. Incoming events are visualised here and here is also where any necessary manual interventions by the operator are made.

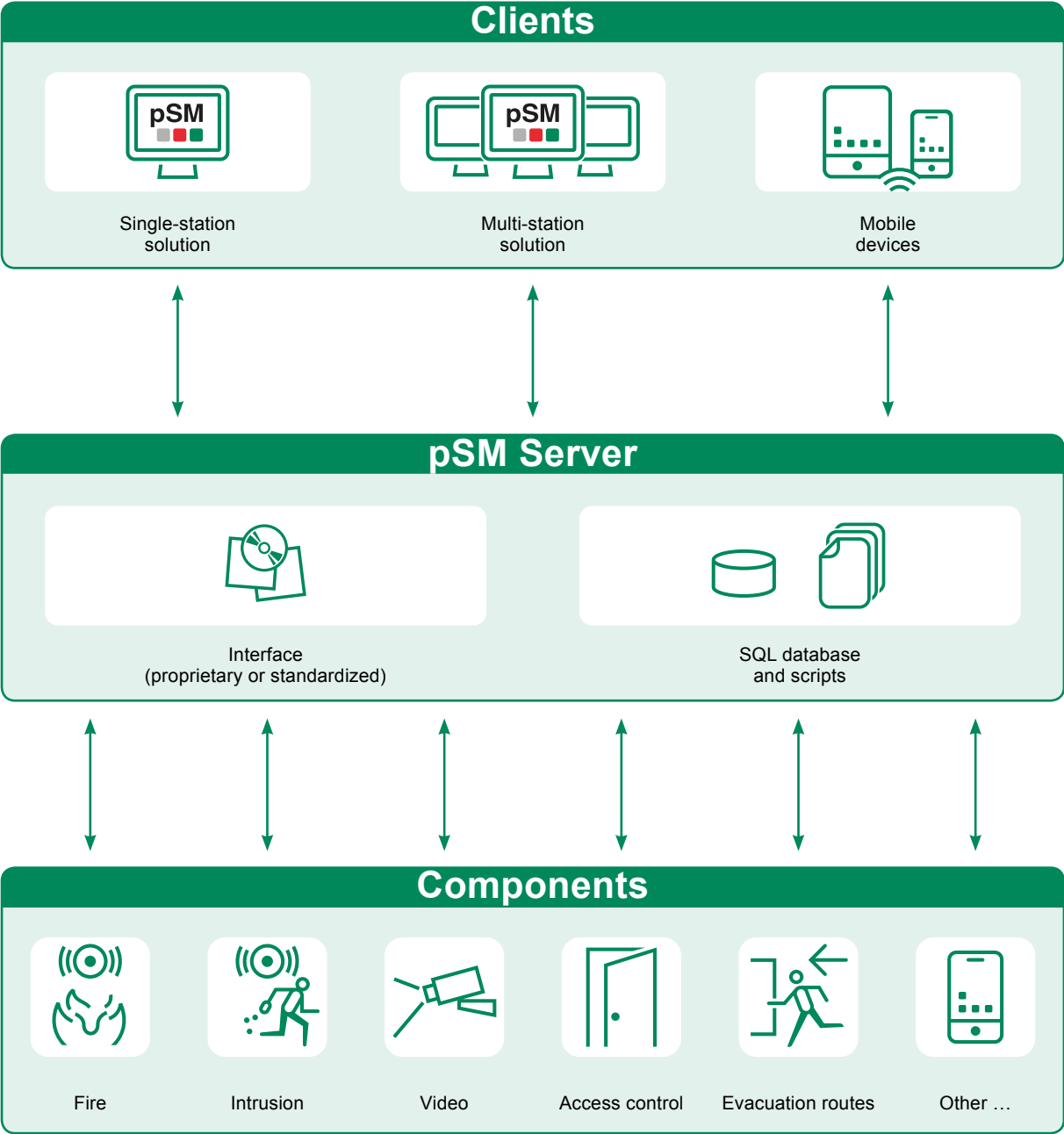
Configuration module

The administration of pSM is done through the Configuration module. The connected hardware and the resulting datapoints are defined, the operators and their rights are set up, the design of the Command centre GUI is established and the licensing of the system is executed.

Graphic editing

The available datapoints are placed at the corresponding locations in the building graphics for visualisation through the Command Centre. This module is also used for defining any websites, plugins or scripts (Groovy) that are to be called through the Command Centre GUI.

pSM System Architecture



Data

Highest Flexibility

Made-to-measure database structures

Through its use of Hibernate, the universal database language interface, pSM makes it possible to deploy databases such as Oracle, MS SQL Server. This range of options greatly facilitates the tailoring needed to work with databases that are already in use or are that are to be implemented.

Centralised data storage

The security-relevant system database is located on the pSM Server. Essential installation processes and necessary system changes are carried out centrally at the pSM Server and transmitted to the permanently online-communicating Clients at the click of a mouse. There is no need for a system restart after changes are made nor for the deployment of dongles. This means that there is less need for potentially time-consuming and costly on-site deployments and less operational time lost through maintenance. The security-relevant data is kept in a “clean” and “consistent” state. This guarantees the highest stability and resistance to data tampering in the server-based database.

Always up-to-date

All Client processes work permanently online. Relevant process information is available for processing at all times. No client-based databases are required, giving further reductions in your investment costs. At the same time, clients are updated at the click of a mouse – “on the fly”. With the result that all users always have the latest information available to them.

System simulation

The integrated simulation component makes it possible to test the system thoroughly before it goes live. It can also be used as a training tool for new operational personnel.



Prevention

Prevention before overreaction

Averting risk

Thanks to the deployment of mobile applications, the verification and evaluation of risk situations and the measures that are needed to deal with them can be made significantly easier. As opposed to classical first-responder intervention methods where they first have to get to the object that is being monitored, the video intervention approach enables an immediate response. Using the connected audio equipment, potential perpetrators can be contacted directly and deterred from continuing with their planned activities through the threat of the intervention measures being deployed.

Configuration

User-Optimised Configuration

Intuitive programming

Together, the central components of the Configuration Client and the Graphic Editor Client form the intuitive programming environment.

Individually customisable processes

The essential system settings such as interface connections or the automated import of datapoints are defined in the Configuration Client.

Workflows or scripts are designed and programmed using the Groovy script language.

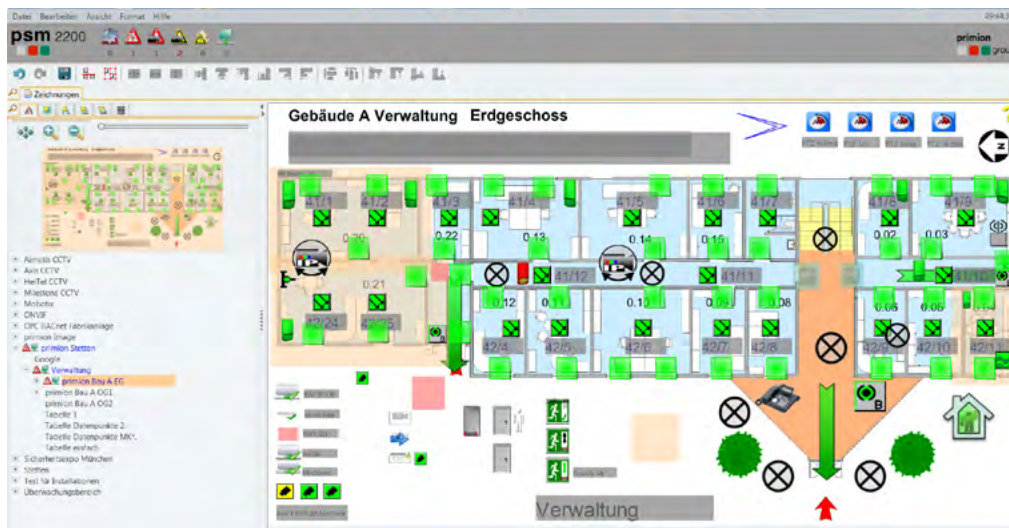
In this way, individual and automated processes can be adjusted ideally to meet the customer's requirements.

“What you see is what you get”

Using the Configuration module and the Graphic Editor, you can define exactly how you want the Client GUI to look like and what you want it to do, from the placing of the graphical elements, to the choice of building layouts and the definition of the interactive buttons.

Customising to match your CI

Thanks to the option of creating individual GUI designs, pSM offers many possibilities. The interactive Workflows can be personalised; your own “Look & Feel” can be specified. The management system adapts itself to the requirements and internal processes of your company.



Graphic Editor with tree structure, building overview, datapoint menu and alarm stack

Service

Our Service – Your Added Value Interfaces on request

Security for your special solutions

We offer individual solutions based on standardised elements. This is guaranteed by our own in-house development department.

This guarantees both the continued integrability and interoperability with your existing and future BMS systems and the possibility of creating customised solutions.

Your reliable partner

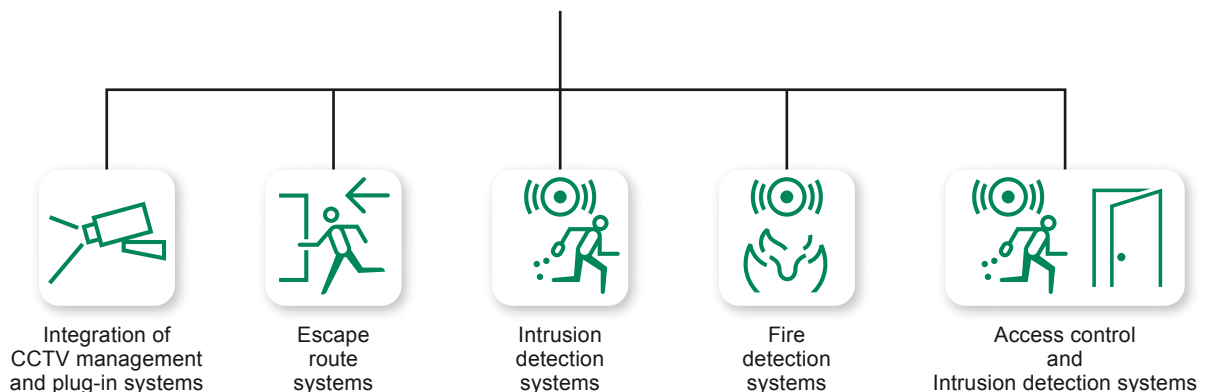
From project planning to system implementation – we are your reliable partner in all phases of the project.

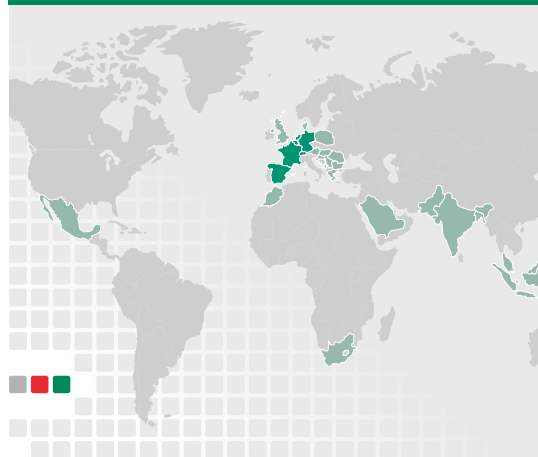
Keeping up to date

Our training department and our modular training programme lay the foundation for your knowledge base. You build up your knowledge step by step and are always up to date.



The integration platform
for security-critical applications





Primion Germany

primion Technology GmbH
Steinbeisstr. 2-5
72510 Stetten a. k. M.
Germany
+49 7573 9520
info@primion.de
www.primion.de

OPERTIS GmbH
Lütersheimer Str. 20
34471 Volkmarsen
Germany
+49 5693 23397-0
info@opertis.de
www.opertis.de

Primion Benelux

sa GET nv
Antwerpsesteenweg 107
2390 Malle
Belgium
+32 3 312 92 30
info@primion.be
www.primion.be

GET Nederland bv
Albert Einsteinweg 4
8218 NH Lelystad
The Netherlands
+31 320 25 37 90
info@primion.nl
www.primion.nl

Primion Spain

primion Digitek SLU
Avenida San Silvestre, s/n
31350 Peralta (Navarra)
Spain
+34 934 774 770
info@primion.es
www.primion.es

Primion France

primion SAS
Immeuble Le Nautille 1
45 rue des Hautes Pâtures
92000 Nanterre
France
+33 (0)1 41 10 43 70
info@primion.fr
www.primion.fr