



pKT Digital cylinder G3

The pKT digital cylinder G3 is installed instead of the usual profile cylinder. It is equipped with a MIFARE® DESFire® or a LEGIC advant® reader. It reads the access rights that have been written onto an access credential by a master reader with an online connection to the central database, and grants or denies access accordingly. These access rights are made up of several time periods whose overall validity can be set as required. If the credential is not presented to a master reader for updating before this period has elapsed, the credential and therefore the cardholder automatically loses all access rights to the offline components.

As the access administration is fully integrated in the online system, the access rights of the autonomous offline units are handled easily and comfortably throughout the whole system. There is no requirement for individual programming of the unit through a mobile programming unit for example.

Depending on the system configuration, up to the last 160 transactions are saved on the device. This event data can automatically be written back to the employee credential at the time of the transaction and then transmitted to the central database the next time it is presented to a master reader. Additionally, the data can be read out from the offline component at any time using a special transactions transfer card and transmitted to the central database through a master reader.

The electronic knob module contains the complete read and control electronics as well as the power supply, using standard CR2 batteries. Installation and battery change can be done easily using the special, system-initialised card and tools.

Features

- ▶ Credential used as information carrier, e.g. battery status, automatic booking transfer, blacklist
- ▶ The electronic knob module can be installed on both sides, from an overall length of 70 mm
- ▶ Individual access rights per cardholder
- ▶ No authorisations are stored in the cylinder
- ▶ Automatic, time-controlled unlocking and locking
- ▶ Toggle mode option (open with first booking, close with next, open with next, etc.)
- ▶ Two optical displays (green & red LEDs) to confirm commands and to show the battery warning status
- ▶ Emergency opening option with external emergency power tool (low power adapter)
- ▶ Bolt lengths from 35 mm. Applications should be checked on case-by-case basis
- ▶ Fits all standard profile cylinder doors in compliance with DIN 18252
- ▶ Battery working life approx. 2 years at 20 operations per day
- ▶ Access rights are administered in the host system
- ▶ Reaction time, typically 1 sec.
- ▶ Acoustic signal to confirm door release
- ▶ Half-cylinder applications are also possible
- ▶ Suitable for use on fire and escape doors

Technical data

| | | |
|-------------------------------|---|------------------------------------|
| Dimensions | Cylinder dimensions for Euro profile locks in accordance with DIN 18252 | |
| Housing | Cylinder and knob housing | Brass, surface nickel-plated |
| | Front element | Hard plastic |
| Electronic knob module | Knob length | 42.7 mm |
| | Ø knob | 40 mm |
| Mechanical knob | Knob length | 20 mm |
| | Ø knob | 29.5 mm |
| Protection class | IP65 | |
| Read technologies | MIFARE® DESFire® or LEGIC advant® | |
| Read distances | MIFARE® DESFire® | Key fobs / cards, typically < 5 mm |
| | LEGIC advant® | Key fobs / cards typically 10 mm |
| Batteries | 2 x CR2 3 V Lithium | |
| Low power opening | Always possible with external power source | |
| Installation site | Intended for interior deployment | |

The device fulfils the specifications of DIN EN 60721-3-3:1995/A2:1997, Class 3K3,3Z11 (interior).

Ordering information

Knob module – pKT knob module, with light ring, 128 KB Flash (interior installation)

| | |
|---------------|-----------------------------|
| 1171-00104.02 | LEGIC advant®, with logo |
| 1172-00104.02 | MIFARE® DESFire®, with logo |

Mechanical inside knob for cylinder adapter

| | |
|-------------|-----------|
| Z220-004.01 | Ø 29.5 mm |
| Z220-004.02 | Ø 34 mm |

Accessories

| | |
|----------------|--|
| Z220-002.02 | Battery change tool |
| Z220-012.01 | Disassembly tool for emergency power contacts |
| Z220-013.02 | Low power adapter for knob module |
| Z220-001.01 | Wireless adapter with diagnostics / programming unit (incl. USB interface) for technicians |
| Z220-005.01 | Protective security rosette |
| | - Preventive measure for higher security requirements |
| | - Cannot be removed from outside |
| Z071-040.01 | Battery set for pKT Digital cylinder, 2 x CR2 3 V |
| H14108-0002.01 | pKT Padlock, shackle height 51 mm, with integrated half-cylinder (without knob module) |
| H14108-0003.01 | pKT Padlock, shackle height 31 mm, with integrated half-cylinder (without knob module) |
| H12108-0004.01 | Cabinet Lock adapter 7 mm for doors 13-20 mm |

G3 / G4 half-cylinder adapters

| | Measurement A (mm) | Measurement B (mm) | Overall length (mm) |
|-------------|-----------------------|-----------------------|------------------------|
| Z221-056.01 | 30 | 10 | 40 |
| Z221-057.01 | 35 | 10 | 45 |
| Z221-058.01 | 40 | 10 | 50 |
| Z221-059.01 | 45 | 10 | 55 |

See next page for further measurements

Ordering information

G3 / G4 cylinder adapters

| | Measurement | | Overall length in mm |
|--------------------|-------------|-----------|-------------------------|
| | A in mm | B in mm | |
| Z221-001.01 | 26 | 26 | 52 |
| Z221-002.01 | 26 | 30 | 56 |
| Z221-003.01 | 26 | 35 | 61 |
| Z221-004.01 | 26 | 40 | 66 |
| Z221-005.01 | 26 | 45 | 71 |
| Z221-006.01 | 26 | 50 | 76 |
| Z221-007.01 | 26 | 55 | 81 |
| Z221-008.01 | 26 | 60 | 86 |
| Z221-009.01 | 26 | 65 | 91 |
| Z221-010.01 | 26 | 70 | 96 |
| Z221-011.01 | 30 | 30 | 60 |
| Z221-012.01 | 30 | 35 | 65 |
| Z221-013.01 | 30 | 40 | 70 |
| Z221-014.01 | 30 | 45 | 75 |
| Z221-015.01 | 30 | 50 | 80 |
| Z221-016.01 | 30 | 55 | 85 |
| Z221-017.01 | 30 | 60 | 90 |
| Z221-018.01 | 30 | 65 | 95 |
| Z221-019.01 | 30 | 70 | 100 |
| Z221-020.01 | 35 | 35 | 70 |
| Z221-021.01 | 35 | 40 | 75 |
| Z221-022.01 | 35 | 45 | 80 |
| Z221-023.01 | 35 | 50 | 85 |
| Z221-024.01 | 35 | 55 | 90 |
| Z221-025.01 | 35 | 60 | 95 |
| Z221-026.01 | 35 | 65 | 100 |
| Z221-027.01 | 35 | 70 | 105 |
| Z221-028.01 | 40 | 40 | 80 |
| Z221-029.01 | 40 | 45 | 85 |
| Z221-030.01 | 40 | 50 | 90 |
| Z221-031.01 | 40 | 55 | 95 |
| Z221-032.01 | 40 | 60 | 100 |
| Z221-033.01 | 40 | 65 | 105 |
| Z221-034.01 | 40 | 70 | 110 |
| Z221-035.01 | 45 | 45 | 90 |
| Z221-036.01 | 45 | 50 | 95 |
| Z221-037.01 | 45 | 55 | 100 |
| Z221-038.01 | 45 | 60 | 105 |
| Z221-039.01 | 45 | 65 | 110 |
| Z221-040.01 | 45 | 70 | 115 |
| Z221-041.01 | 50 | 50 | 100 |
| Z221-042.01 | 50 | 55 | 105 |
| Z221-043.01 | 50 | 60 | 110 |
| Z221-044.01 | 50 | 65 | 115 |
| Z221-045.01 | 50 | 70 | 120 |
| Z221-046.01 | 55 | 55 | 110 |
| Z221-047.01 | 55 | 60 | 115 |
| Z221-048.01 | 55 | 65 | 120 |
| Z221-049.01 | 55 | 70 | 125 |
| Z221-050.01 | 60 | 60 | 120 |
| Z221-051.01 | 60 | 65 | 125 |
| Z221-052.01 | 60 | 70 | 130 |
| Z221-053.01 | 65 | 65 | 130 |
| Z221-054.01 | 65 | 70 | 135 |
| Z221-055.01 | 70 | 70 | 140 |

G3 / G4 anti-panic cylinders

| | Measurement | | Overall length in mm |
|--------------------|-------------|-----------|--------------------------|
| | A in mm | B in mm | |
| Z221-500.01 | 30 | 30 | 60 |
| Z221-501.01 | 30 | 35 | 65 |
| Z221-502.01 | 30 | 40 | 70 |
| Z221-503.01 | 30 | 45 | 75 |
| Z221-504.01 | 30 | 50 | 80 |
| Z221-505.01 | 35 | 30 | 65 |
| Z221-506.01 | 35 | 35 | 70 |
| Z221-507.01 | 35 | 40 | 75 |
| Z221-508.01 | 35 | 45 | 80 |
| Z221-509.01 | 35 | 50 | 85 |
| Z221-510.01 | 40 | 30 | 70 |
| Z221-511.01 | 40 | 35 | 75 |
| Z221-512.01 | 40 | 40 | 80 |
| Z221-513.01 | 40 | 45 | 85 |
| Z221-514.01 | 40 | 50 | 90 |
| Z221-515.01 | 45 | 30 | 75 |
| Z221-516.01 | 45 | 35 | 80 |
| Z221-517.01 | 45 | 40 | 85 |
| Z221-518.01 | 45 | 45 | 90 |
| Z221-519.01 | 45 | 50 | 95 |
| Z221-520.01 | 50 | 30 | 80 |
| Z221-521.01 | 50 | 35 | 85 |
| Z221-522.01 | 50 | 40 | 90 |
| Z221-523.01 | 50 | 45 | 95 |
| Z221-524.01 | 50 | 50 | 100 |
| Z221-526.01 | 55 | 55 | 110 |
| Z221-527.01 | 60 | 30 | 90 |
| Z221-528.01 | 55 | 40 | 95 |
| Z221-529.01 | 30 | 55 | 85 |
| Z221-530.01 | 55 | 30 | 85 |
| Z221-531.01 | 30 | 70 | 100 |
| Z221-533.01 | 40 | 65 | 105 |
| Z221-534.01 | 45 | 55 | 100 |
| Z221-535.01 | 40 | 55 | 95 |
| Z221-536.01 | 45 | 80 | 125 |
| Z221-537.01 | 50 | 75 | 125 |
| Z221-538.01 | 60 | 65 | 125 |
| Z221-540.01 | 60 | 35 | 95 |
| Z221-541.01 | 50 | 55 | 105 |
| Z221-542.01 | 65 | 60 | 125 |
| Z221-543.01 | 35 | 65 | 100 |
| Z221-544.01 | 65 | 35 | 100 ¹⁾ |
| Z221-545.01 | 80 | 45 | 125 ¹⁾ |
| Z221-556.01 | 30 | 40 | 70 ²⁾ |
| Z221-557.01 | 40 | 30 | 70 ²⁾ |
| Z221-559.01 | 35 | 75 | 110 |
| Z221-562.01 | 55 | 35 | 90 |
| Z221-569.01 | 55 | 45 | 100 ³⁾ |
| Z221-570.01 | 60 | 60 | 120 ³⁾ |
| Z221-571.01 | 35 | 90 | 125 ³⁾ |
| Z221-572.01 | 35 | 90 | 125 ³⁾⁴⁾ |
| Z221-573.01 | 50 | 90 | 140 ³⁾⁴⁾ |
| Z221-576.01 | 35 | 55 | 90 |

1) Panic function interior knob
2) Digital cylinder, brass

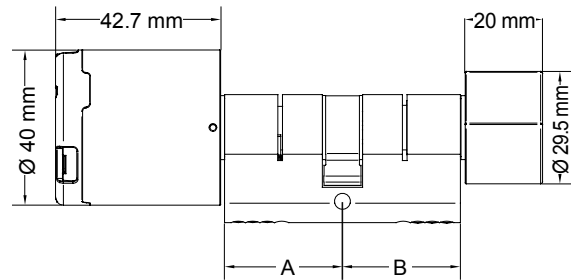
3) Cylinder adapter, special length 35
4) B not fixed-installed

Ordering example:

pKT Digital cylinder G3, MIFARE® DESFire®



| Electronic knob module | Measurement A in mm | Measurement B in mm | Mechanical interior knob |
|------------------------|-----------------------------|---------------------|--------------------------|
| I172-00104.01 | 30 | 40 | Z220-004.01 |
| | Reversible cylinder adapter | | |
| | Z221-013.01 | | |



Cylinder adapter length calculation

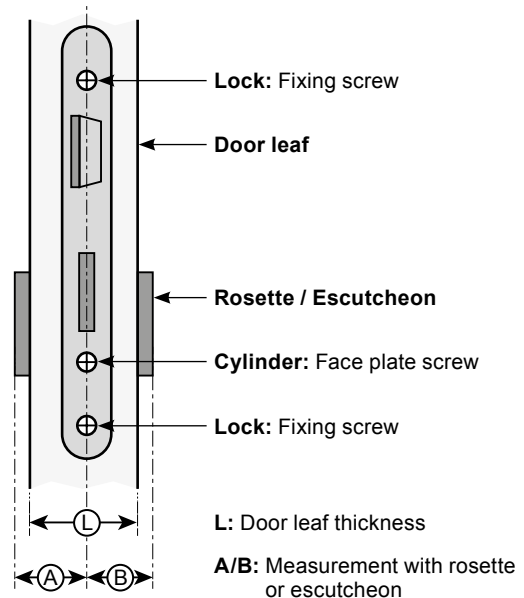
- ▶ Measurement A = Exterior / electronic knob module
- ▶ Measurement B = Interior / mechanical knob module

Note:

- ▶ The measurement goes from the middle of the faceplate screw to the outer edge of the rosette or escutcheon.
 - ▶ A panic lock and a panic cylinder adapter must be installed in the case of installation on a door with panic function (escape door). The mechanical interior knob is already fixed-mounted to the panic cylinder adapter.
- Important ordering information: Measurement B = Interior knob (See previous page for part number)

Please note:

If a pKT knob module is to be installed on both sides, the minimum overall length has to be at least 70 mm.



! Safety advice
In order to guarantee increased security, a security rosette should be installed if the locking cylinder protrudes from the surface of the door.

! Safety advice
In order to avoid the possibility of hand injuries when opening and closing the door and to increase the user comfort, there should be a safety distance between the handle and the door frame. This must be at least 25 mm, to comply with GUV-V SI*.

* GUV: German accident insurance health & safety regulations

! Safety advice
When the cylinder is operated in combination with an anti-panic lock, it must be guaranteed that at every position, the cylinder lock catch can be opened safely and/or is not damaged.
Measurements A and B cannot be swapped. (See previous page for measurements and part numbers)